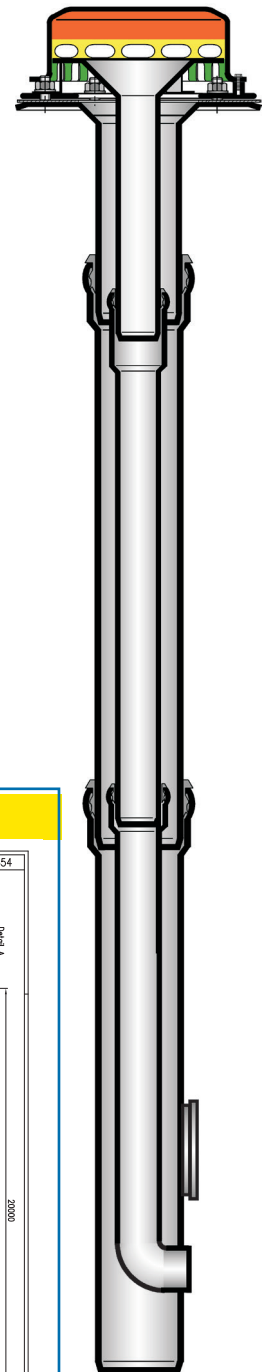


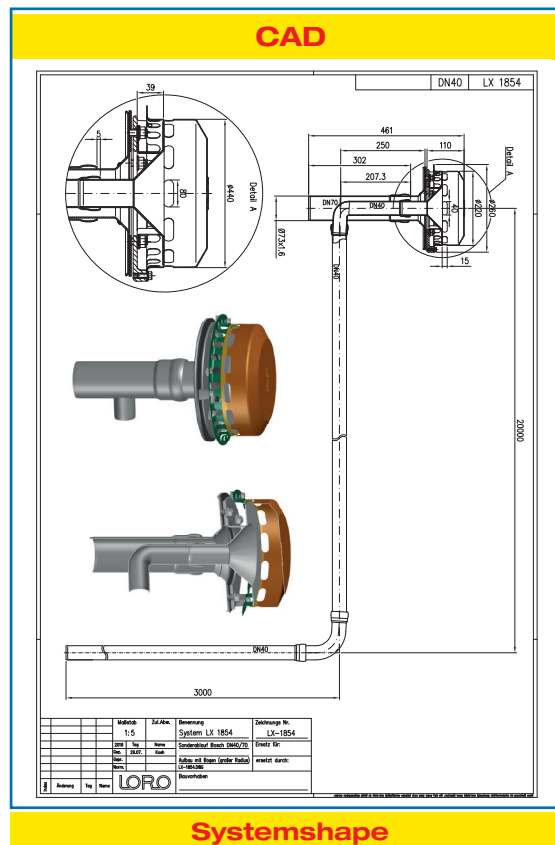
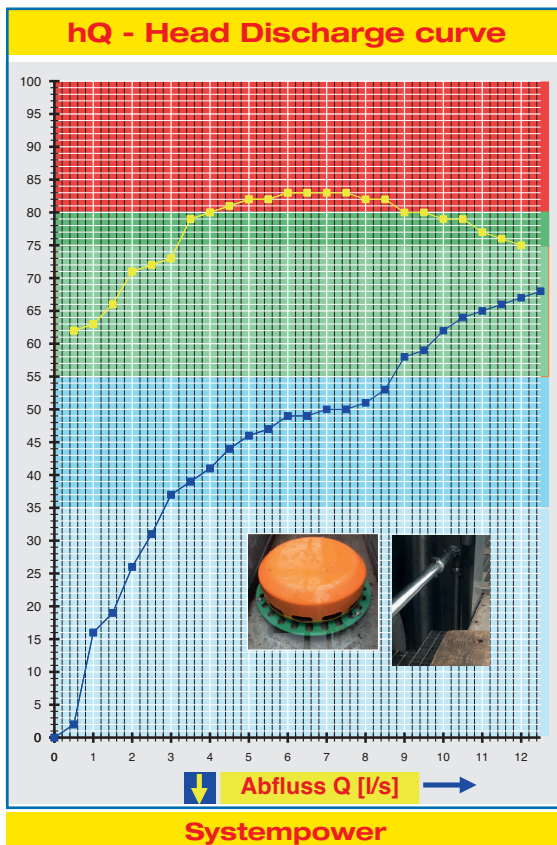
Specification sheet LX 1854 Roof drainage system Series 49 Main emergency combination



Main drainage		Emergency drainage	
Gravity flow		Gravity flow	
Silent		Silent Power	
Combination			
Discharge rate:	2,8 l/sec	Discharge rate:	8,2 l/sec
Water height:	55 mm	Water height:	75 mm
Diameter:	DN 70	Diameter:	DN 40
LX-Number:	LX 1854	LX-Number:	LX 1854
Weir height:	0 mm	Weir height:	40 mm
Drain:	not ventilated	Drain:	not ventilated
Downpipe:	not ventilated	Downpipe:	not ventilated
Downpipe height:	min 4,2 m	Downpipe height:	min 4,2 m
Drainage:	in sewer	Drainage:	on floor
Flange:	Clamping flange	Flange:	Clamping flange

LX 1854 Piece list

1 x Art.-NO. 21539.070X, Main emergency combination roof drain

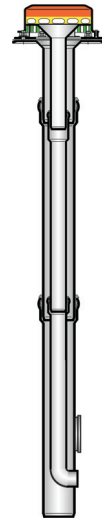
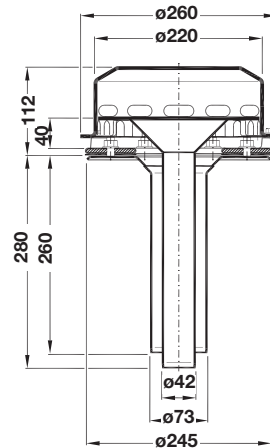
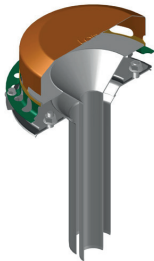
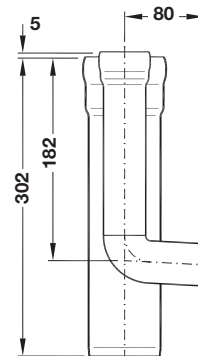


Water height	mm	10	15	20	25	30	35	40	45	50	55	60	65	70	75	80	85	90	95
Discharge	l/sec	0,8	1,0	1,6	2,0	2,4	2,8	3,8	4,8	7,0	8,7	9,7	11,0	-	-	-	-	-	-
		Silent						Silent Power											

LORO-X **Main emergency** combination roof drain vertical, DN 70/40**LX1854-5X****Series 49**

Drain Art.-No. 21539.070X

with clamping flange

**LORO-X outlet part**for main emergency combination roof
drain, DN 70/40
Art.-No. 05049.CA0X

Heat tracing: LOROWERK recommends to check all drains and pipes with regard to their frost-sensibility. Where necessary, these parts should be upgraded with heat tracing.